

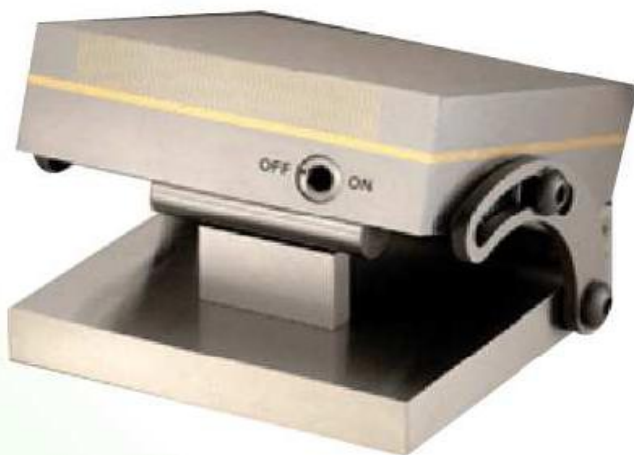


Ital Produtos Industriais Ltda – Tel: (11) 4148 2518–FAX: (11) 4703 5501–E-mail: ital@italpro.com.br

SINE CHUCK MCS SERIES

Sine permanent magnetic chuck

MCS



Features:

Large effective area is provided for machining the work pieces.
Positive locking at all angles without any distortion.
Constructed of hardened alloy tool steel.
Angle precision 0.007/100mm. Low height for more wheel clearance.

Applications:

Flat type for wide range of uses. Ideal for high accuracy grinding operations.

Specifications

Art No.	A (mm)	B (mm)	C (mm)	D (mm)	E (mm)	Pole Pitch	Angle
MCS1018	180	130	82	75	175	2(1.5+0.5)	0°-80°
MCS1025	250	132	82	75	175	2(1.5+0.5)	0°-80°
MCS1225	250	120	82	75	175	2(1.5+0.5)	0°-80°
MCS1530	300	150	87	100	300	2(1.5+0.5)	0°-80°
MCS1545	450	150	87	100	300	2(1.5+0.5)	0°-80°
MCS2040	400	200	150	100	450	2(1.5+0.5)	0°-80°
MCS2050	400	200	150	100	450	2(1.5+0.5)	0°-80°

